



Beaufort County Public Works Stormwater Infrastructure Project Summary

Project Summary: Marina Boulevard Outfall

Activity: Drainage Improvement

Narrative Description of Project:

Completion: Nov-13

Project improved 515 L.F. of drainage system. Grubbed, cleared and cleaned out 485 L.F. of channel. Cleaned out 30 L.F. of roadside ditch. Extended (1) access pipe. Installed (1) access gate. Hydroseeded for erosion control.

2013-001 / Marina Boulevard Outfall	Labor Hours	Labor Cost	Equipment Cost	Material Cost	Contractor Cost	Indirect Labor	Total Cost
AGI / Access Gate - Installed	15.0	\$355.10	\$30.54	\$195.38	\$0.00	\$243.15	\$824.17
APEX / Access Pipe - Extended	33.0	\$779.60	\$491.71	\$207.48	\$0.00	\$316.11	\$1,794.90
AUDIT / Audit Project	1.0	\$20.46	\$0.00	\$0.00	\$0.00	\$13.23	\$33.69
AW / Administrative Work	2.0	\$88.54	\$0.00	\$0.00	\$0.00	\$67.92	\$156.46
HAUL / Hauling	85.5	\$1,916.01	\$1,312.40	\$3,376.80	\$0.00	\$1,274.82	\$7,880.03
ODCO / Outfall ditch - cleaned out	65.0	\$1,521.43	\$364.46	\$130.49	\$0.00	\$605.50	\$2,621.88
ONJV / Onsite Job Visit	35.0	\$1,116.55	\$129.20	\$61.61	\$0.00	\$716.70	\$2,024.06
PP / Project Preparation	13.0	\$404.82	\$35.08	\$19.58	\$0.00	\$289.44	\$748.92
PROFS / Professional Services	0.0	\$0.00	\$0.00	\$0.00	\$1,075.00	\$0.00	\$1,075.00
PRRECON / Project Reconnaissance	2.0	\$66.36	\$7.24	\$8.76	\$0.00	\$48.94	\$131.30
UC / Utility Coordination	3.0	\$99.54	\$10.86	\$8.76	\$0.00	\$73.41	\$192.57
UTLOC / Utility locates	2.5	\$51.15	\$7.24	\$8.76	\$0.00	\$33.08	\$100.23
WSGRB / Workshelf - Grubbed	84.0	\$1,900.50	\$1,088.40	\$265.78	\$0.00	\$861.58	\$4,116.26
2013-001 / Marina Boulevard Outfall Sub Total	341.0	\$8,320.06	\$3,477.13	\$4,283.41	\$1,075.00	\$4,543.87	\$21,699.47
Grand Total	341.0	\$8,320.06	\$3,477.13	\$4,283.41	\$1,075.00	\$4,543.87	\$21,699.47

Before



During



After



Project: Marina Blvd

Activity: Drainage Improvement

Project #: 2013-001

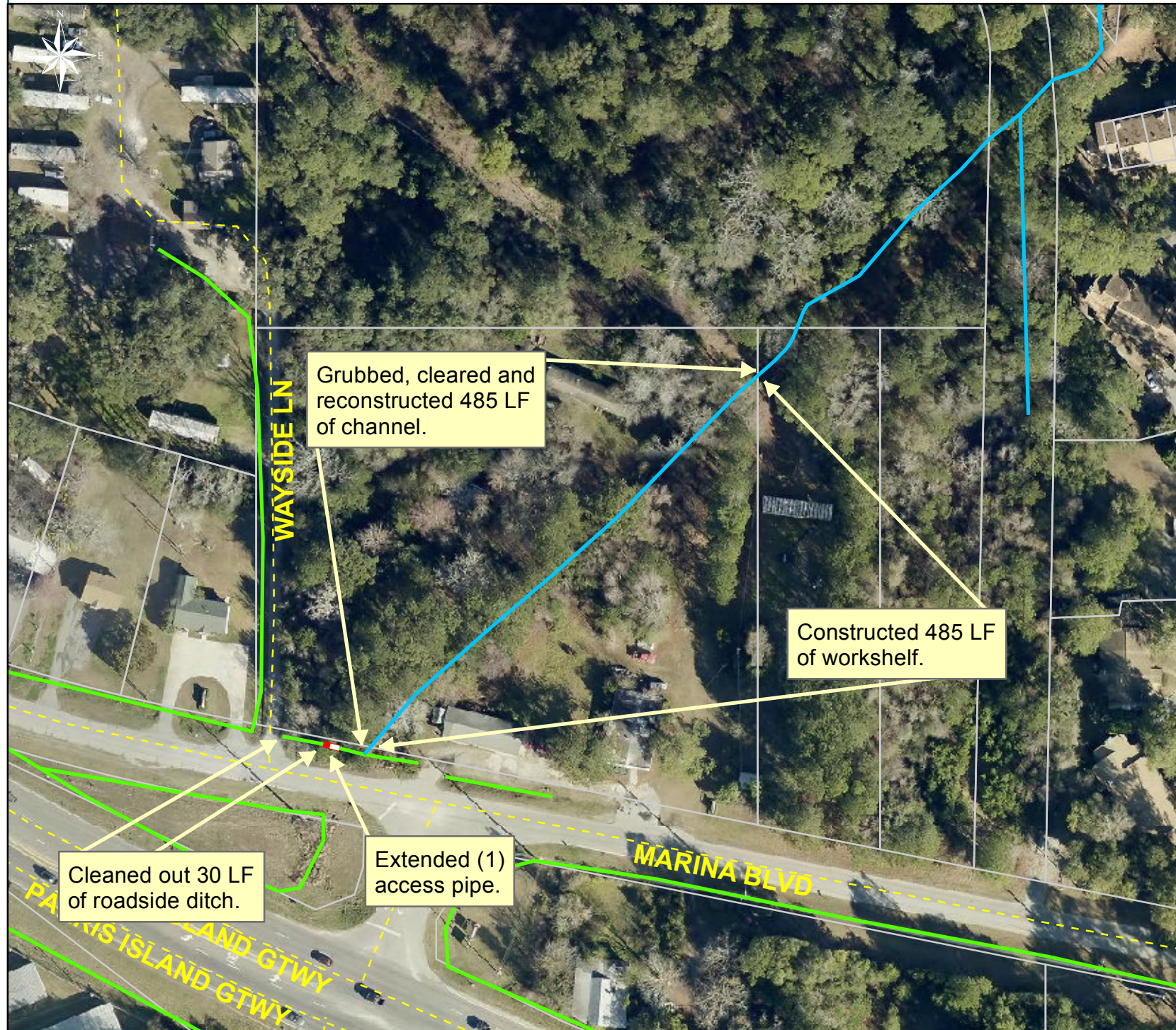
Township: Port Royal Island

Completed: November 2013

Legend

TYPE

- River
- Creek/Stream
- River/Creek/Marsh BANK
- Channel (fka Outfall)
- Channel Pipe
- Lateral
- Lateral Pipe
- Roadside
- Roadside Pipe
- Road Pipe
- Crossline Pipe
- Driveway Pipe
- Access Pipe
- Bleeder Pipe



0 25 50 100 150 200 Feet

1 inch = 112 feet

Prepared By: BC Stormwater Management Utility
Date Print: 12/20/13
File: C:/sethdata/projects/projectmaps/Marina Blvd 2013-001